



MAX DETAILS

GROUP

MAX DETAILS GROUP CO.,LTD.

COMPANY PROFILE

MAX DETAILS GROUP CO., LTD.

We are a company selling products used in the automotive parts industry. air conditioner electrical appliance Including welding electrodes of all kinds, fluxes, industrial inks Welding equipment, copper, iron,

Including materials used in industrial plants in Thailand. which we have the source of the product Including materials from various manufacturers Many countries such as Japan, Korea, Taiwan, China, Singapore and many more.

CONTACT US

Address :

542/23 Ramkhamhaeng39 (Thepleela 1)
Prachauthit Rd. Wang Thong Lang District.
Bangkok 10310

TEL : (+66)02-559-1013

Email: info@maxdetails.com

Website :

www.maxdetails.com



OUR MAIN PRODUCT



- BRAZING
- WELDING
- SPOT WELDER
- MATERIAL
- CHEMECAL & GENERAL
- MACHINE TOOL
- JIG FIXTURE



OUR CLIENT

ENKEI 



 **MITSUBISHI
ELECTRIC**
Changes for the Better




SUZUKI


HONDA


HONDA


SUMMIT

DAISHIN
AsiaPacific
DAISHIN ASIA PACIFIC CO.,LTD.

HOLYTEK

MAGNATE
SIAM INTERMAGNATE CO.,LTD.


BVS

Lucky Flame

Rinnai

DunAn



TOSHIBA



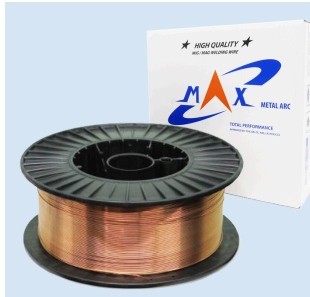
BW
Bitwise
GROUP


THAI SUMMIT GROUP


FUJITSU



I N D E X



BRAZING

- BRAZING TYPE
- TOOLS
- ACCESSORIES
- AUTO BRAZING



CHEMICAL & GENERAL

- INK
- CHEMICAL
- LUBRICANT



WELDING

- MMA
- MIG/ARGON
- ACCESSORIES
- WELDING WIRE



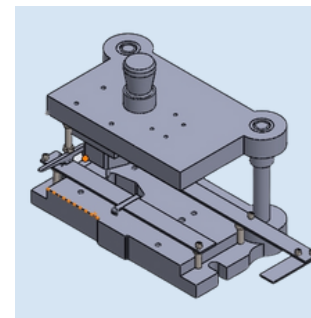
MACHINE TOOL

- CARBIDE
- MAINTENANCE



SPOT WELDER

- DEVICE
- ACCESSORIES



JIG FIXTURE

- JIG MACHINE
- SPARE PARTS
- WIPER



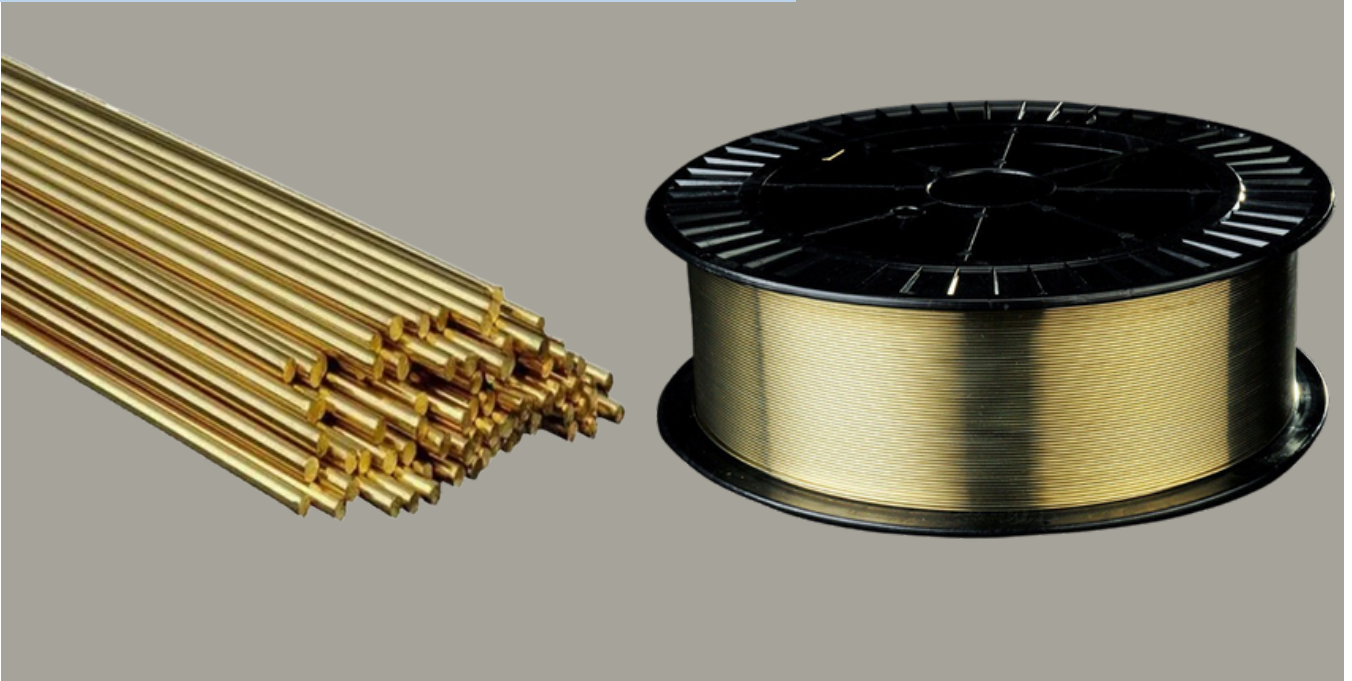
MATERIAL

- PARTS SPOT



B R A Z I N G

BRASS WELDING RODS



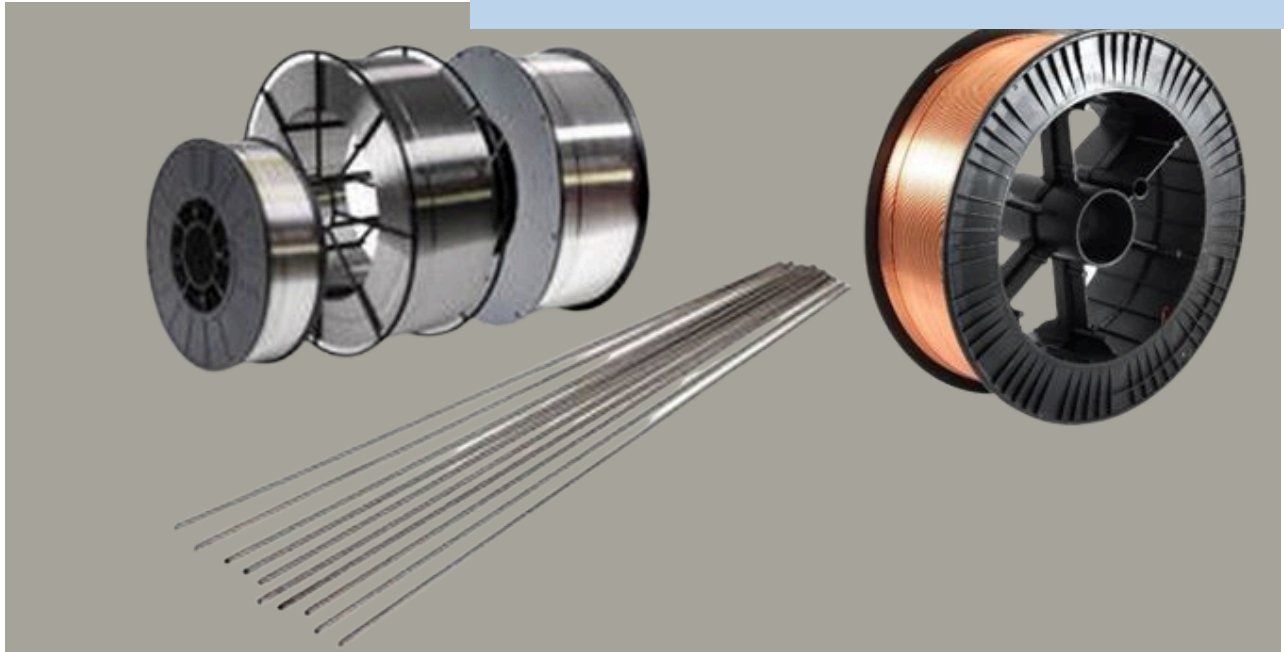
Brass Brazing Rod

Used for Construction etc.

Size : 1.6mm, 2.0mm, 2.4mm, 3.0mm and 3.2mm.

AWS Standard	Chemical Analysis							Melting Range		Applications
	CU	Zn	Sn	Fe	Ni	Si	Other	Solidus	Liquidus	
Sw221	60	Bal	1	-	-	0.3	-	890	905	Melting point is about 900°C. Braze welding of copper, steel and cast iron.
RBCuZn-A	59	Bal	0.6	-	-	-	-	875	885	Melting point is about 900°C. Braze welding of copper, steel and cast iron.
RBCuZn-C	58	Bal	0.9	0.8	-	0.1	-	865	890	Melting point is about 900°C. Gas welding of Carbon arc welding of brass, also braze welding of cooper, steel and cast iron.

SILVER WELDING RODS

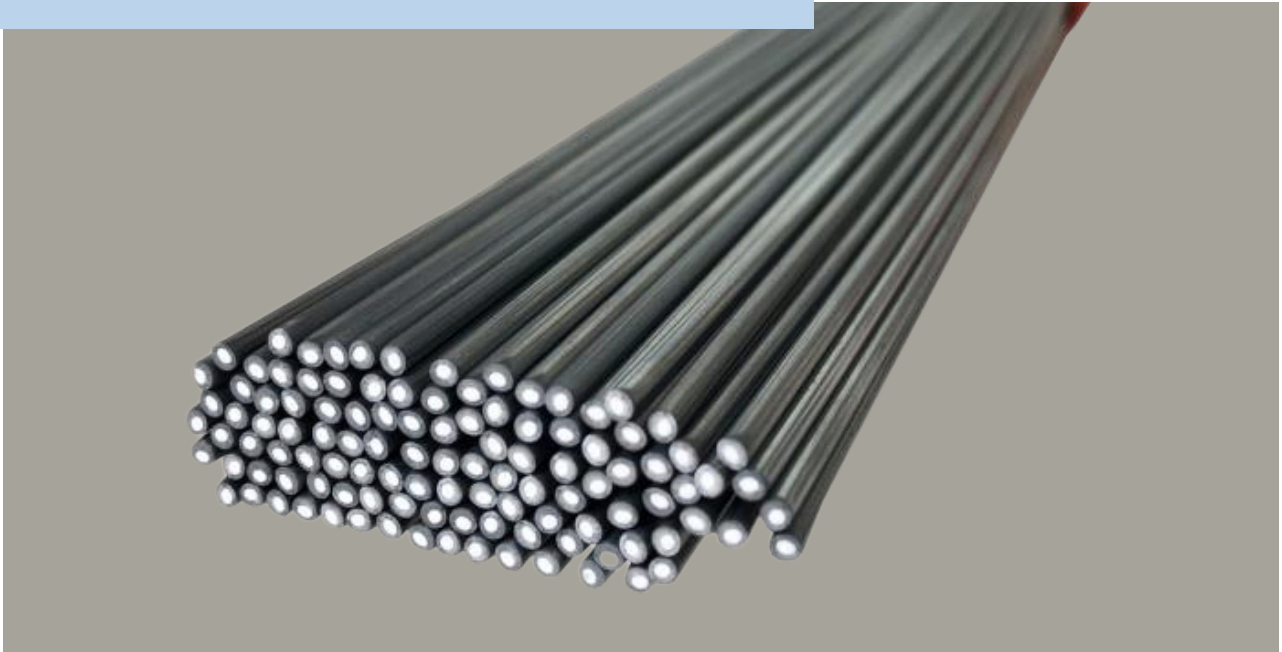


Silver Brazing Rod

Many Options to be chose such as High % and Low%. Used for welding copper based rod to improved efficiency of welding.

Grade of Blazing Alloy	Chemical Analysis				Melting Range	International Standard	
	Ag	Cu	Zn	Others	Celsius	DIN : 8513	AWS : A5.8
Ag15%	15	80	-			-	LAg15-p
	For brazing copper, brass						
Ag35%	35	32	33	-	680-750	-	Bag-35
	Intermediate temperature filter metal for use with ferrous and nonferrous materials.						
Ag40%	40	30	30	-	675-725	-	Bag-35
	For Cooper base alloys, mild steel, Nickle and Monel, and wear a narrow melt range is desired.						
Ag45%	40	30	25	-	670-740	L-Ag44	Bag-5
	It is an excellent filler metal foe blazing brass parts (such as ships piping, band instruments, aircraft engine oil coolers, brass lamps etc.)						

ALUMINIUM WELDING RODS



Aluminium Brazing Rod

New Innovation for brazing rods such as Copper Base or Aluminum based rods. Most used in Electronics Industrial high performance included flux-core and non flux-core

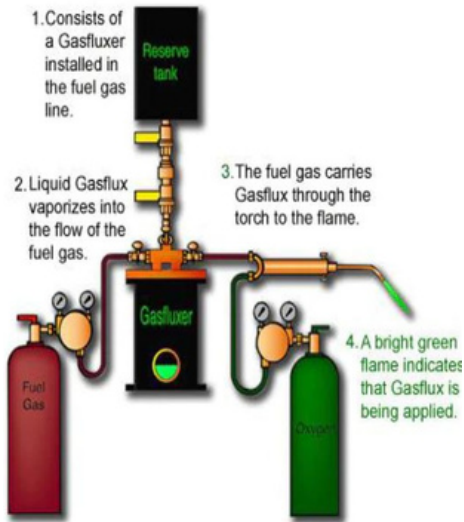
Brazing Alloy	Type	Component		Brazing Temp (Celsius)	Comment
		Alloy	Flux		
Cu-Al Flux-Cored Wire	XR-FC0215	Zn, Al, Others	KCsAlF4 15%-20%	420-480	Melting temperature of the flux is higher than alloy. High Strength. Fast flow Easy to use.
	XR-FC20A	Zn, Al, Ag, Others			Intermediate flow. Higher strength. Higher conductivity
Cu-Al Wire	XR-BW200	Zn, Al, Others	-	378-385	Solder for joining copper and aluminum. Used with the flux paste
	XR-BW15A	Zn, Al, Ag, Others		420-480	Intermediate flow. Higher strength. Higher conductivity Used with the flux paste.
Al-Al Flux-Cored Wire	4047	Al-12Si	K1-3 AlF4-6 15%-20%	557-582	High Strength
	FC4047	Al-12Si			

XINRUI[®]
新锐

VAPOUR TANK



VAPOUR TANK



- Gas Flux used for assisted in welding also mixed with Acetylene, LPG without slug left.



- Vapour Gas Flux form Xinrui have been accomplished Standard of Rosh and provide a lot of variant such as 401L, 402L, 403L, 404L and 405L



FLUX

TECHNICAL DATA

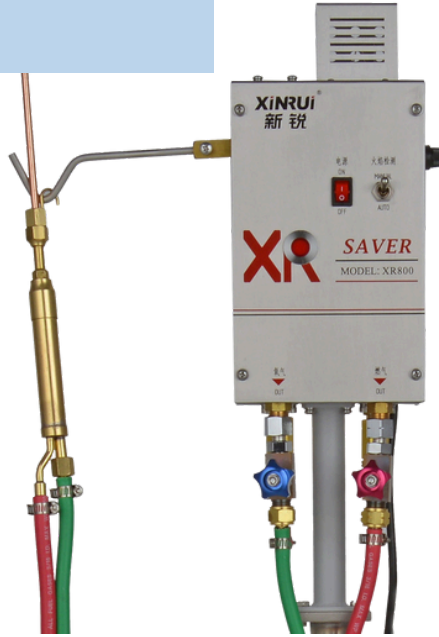


Model	XRHF-150A	XRHF-150B	XRHF-375B	XRHF-158M-B	XRHF-160D-C-B
Characteristic	Energy saving		Large flow	Energy saving, easy to clean	Energy saving
Suitable gas	Acetylene, LPG, propane, etc				
Brazing method	Manual, automatic	manual	Large automatic brazing	Manual	Automatic, manual
Tank volume	4L	-	10L	4L	4L
Max. gas flow	3m ³ /h	3m ³ /h	15m ³ /h	3m ³ /h	3m ³ /h
Inlet pressure	0.06 ~ 0.1Mpa				
Inlet	5/16 Hose socket				
Outlet	5/16 Hose socket				
Weight	16Kg	12.6Kg	37Kg	17.5Kg	16Kg



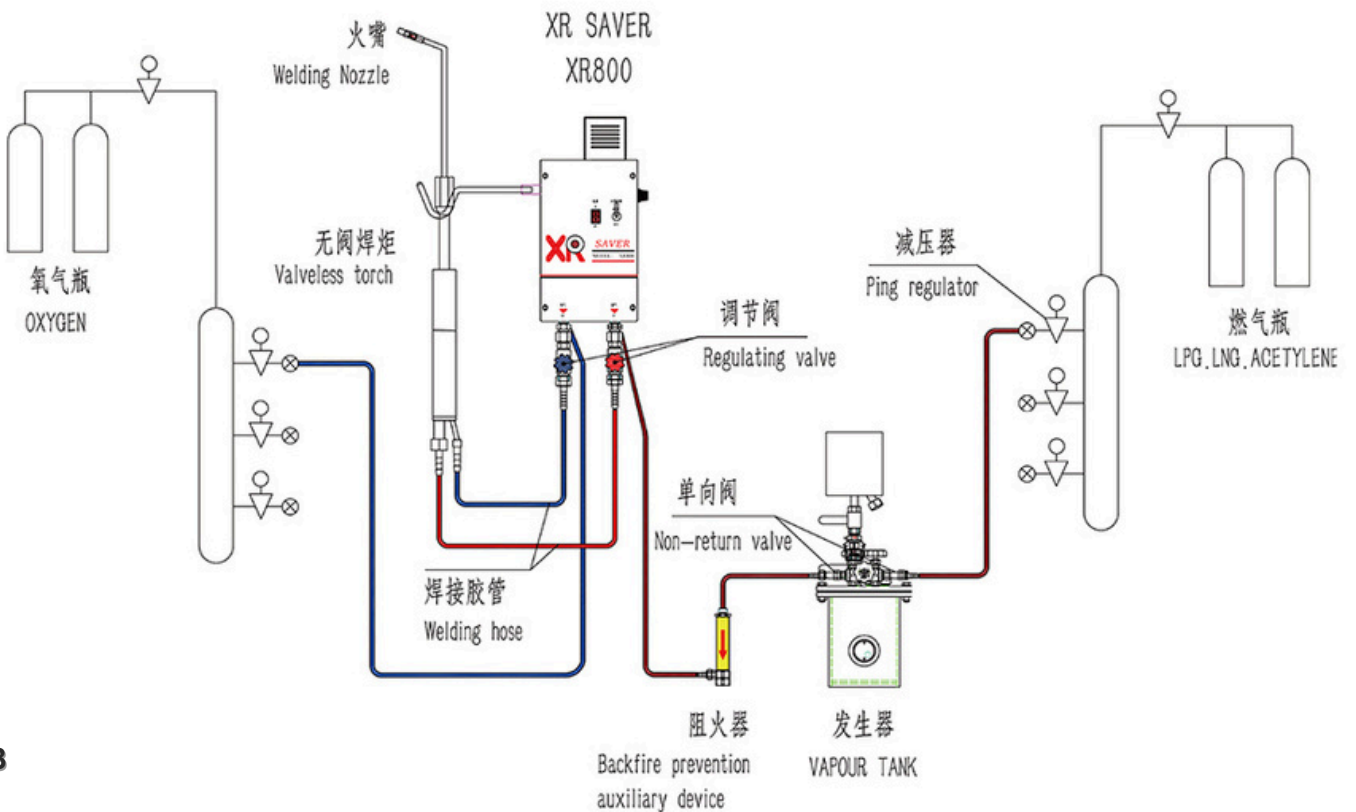
Model	Main composition	Base metal	Application	Technical document
FB400L	Trimethyl borate	Only applicable to brazing of copper and copper	Flame brazing	MSDS
FB402L	Trimethyl borate	For copper and copper, copper and brass	Flame brazing	MSDS
FB404L	Trimethyl borate	Suitable for brazing of copper pipe and copper pipe, copper pipe and brass structural parts, brass and brass, copper and iron pipe, iron pipe and iron pipe and carbon steel and carbon steel.	Flame brazing	MSDS

GAS SAVER

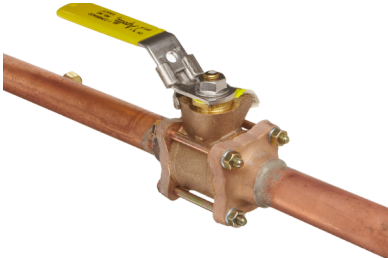


Gas Saver
XR-800N

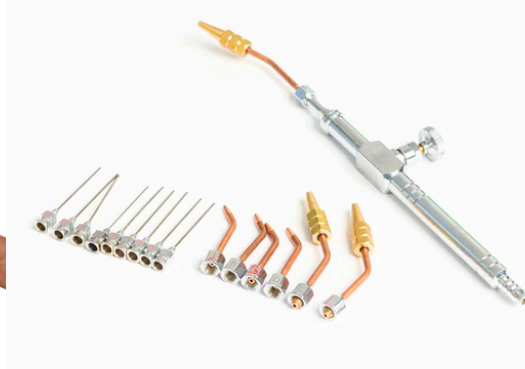
DIAGRAM



ACCESSORIES



BRAZING VALVE



ANTI-BACKFIRE



REGULATOR

AUTO BRAZING MACHINE



Power Supply	220/380V 50/60HZ, 3Phase
Electric Power	30KVA
Cooling Water	30 liter/min - 1-3 BARS
Air Consumption	40 liter/min - 6-7 BARS
Diameter of the Saw Blade	from 350 to 1,600mm
Segment Dimension Length/Height/Thickness	from 18 to 50mm / 5 to 25mm / 1.6 to 12mm
Adjustable Brazing Time	0-30 sec
Adjustable Cooling Time	0-60 sec
Overall Dimension	Approx 1,200W x 500L x 2,300H
Weight (Indicative)	Approx. 2,000KG
Option	Temp. Control System, Cooling System, Auto Flux Supply



WELDING/MMA



MIG WELDING



“Max Metal Arc” gas shielding welding wire is recommended for a wide variety of positional MIG welding for mild and alloy steels. It is typically used in shielding welding wire provide low spatter and excellent performance with consistent copper coating ensuring smooth feeding.

Item	Specifcation		Specifcationrang (mm)	Phyisl Properties Of Deposited Meteals				Chemical Compositions Of Weid Wires(wt%)						
	GB	AWS		Tensile Mpa	Yield Strength Mpa	Elongation %	Lmpact J/C	C	Mn	Si	P	S	Mo	Cu
ER50-6	ER50-6	ER70S-6	1.6/2.0/2.5/3.2/4.0/5.0	565	490	29	88 (-40)	0.080	1.50	0.85	0.010	0.012	—	0.10
ER49-1	ER49-1	—		545	430	30	70 (-40)	0.070	1.90	0.85	0.014	0.012	—	0.10
ER50-3	ER50-3	ER70S-3		555	450	32	90 (-20)	0.075	1.10	0.54	0.012	0.011	—	0.10
ER308	S308	ER308		605	—	42	—	0.050	1.79	0.33	Cr:19.50	Nr:10.20	—	—

ALUMINIUM FLUX-CORED WIRE



- Wonderful Permetability and Spreading ability
- Wonderful corrosion resistance.
- Easy to Operate with lower brazing temperature than 4047 rod.
- Environment friendly and contains no chloride iron with the RoHS Directive 2002/95/EC.
- Post braze cleaning is not required as the flux and its residues are non-hygroscopic



SPOT WELDER



CAP TIP



SHANK



ADAPTER

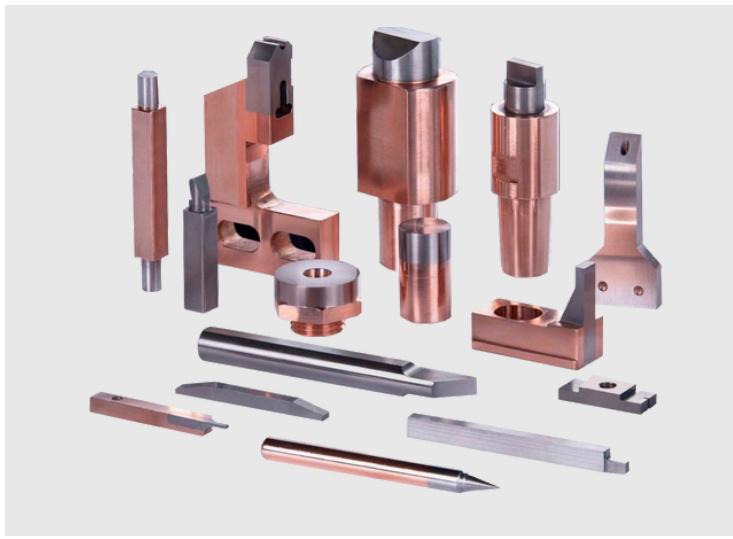


HOLDER



UPPER AND LOWER FOR BOLT WELDING

SPOT WELDER



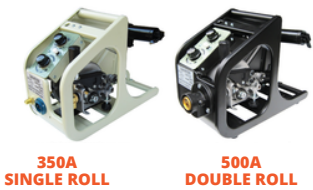
ELECTRODE FOR NUTS WELDING



SHUNT

TORCH AND NOZZLE

ชุดป้อนลวด PANA



ชุดป้อนลวด OTC



กรอบชุดป้อนลวด



REEL SHALF



FRAME MOTOR



PRESSURE ROLLER

ด้ามจับชุดป้อนลวด

หัวส่งลวดทางออก

ฟาครอบ POTENTIOMETER

ปลั๊กเสียบฐานปืน

ฐานเสียบปืน

พัดลม

CONTROL BOX



POTENTIOMETER TOCOS



เฟรมปลั๊กเสียบฐานปืน

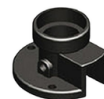


AC220V DC24V



PANA

PANA



SOLENOID VALVE PANA



PANA

LINER



PANA (หัวสั้น)

PANA (หัวยาว)

PANA (TEFLON)

MILLER

LINCOLN

ESAB

OTC

EURO

EURO(TEFLON)

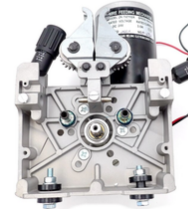
MOTOR ชุดป้อนลวด



SSJ-4A



SSJ-15



76ZY-02A

ROLLER



PANA



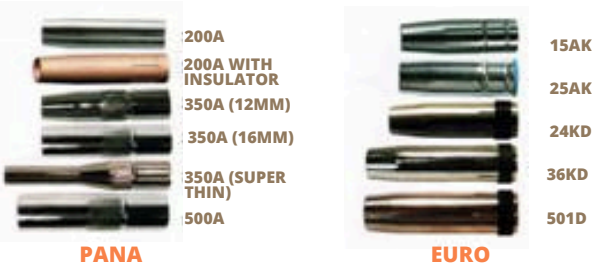
OTC



LINCOLN

TORCH AND NOZZLE

NOZZLE



SWAN NECK



TORCH SET



TIP HOLDER



INSULATOR



CONTACT TIP



GAS DIFFUSER



SPATTER PROTECTION

SWITCH PANA

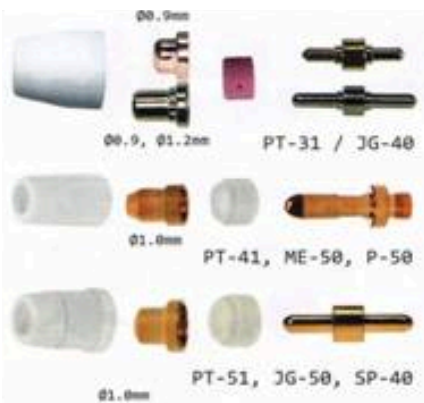
HANDLE PANA



FOR PANASONIC PLASMA



FOR EASB PLASMA



FOR TAIWAN/THAI PLASMA



FOR HYPERTHERM PLASMA



TORCH AND NOZZLE

FOR THERMAL DYNAMIC PLASMA



FOR OTC PLASMA



FOR TRAFIMET PLASMA



FOR SAF PLASMA



FOR CEBORA PLASMA



FOR PACIFIC PLASMA



FOR KJ-200



FOR ด้านตัดพลาสมา



CHEMICAL & GENERAL



การใช้งานบนพื้นผิววัสดุต่าง ๆ



Stamp Ink



Solvent



Stamp Pad

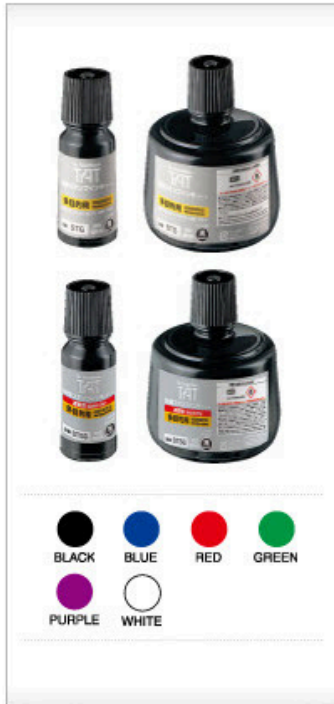


Sur Face	Drying Time	Usage	Item	Contents	Color
All Surface	5-10 min.	Refill for TAT ATG-3 And 4 Stamp pad.	STG - 1	55 ml.	●
			STG- 3	330 ml.	
	1-5 min. Quick dry ink	Refill for TAT Unlinked Stamp pad	STSG - 1	55 ml.	○
			STSG- 3	330 ml.	
Material	5-10 min.	Refill for TAT ATG-3 And 4 Stamp pad.	STM - 1	55 ml.	●
			STM- 3	330 ml.	
	1-5 min Quick dry ink	Refill for TAT Unlinked Stamp pad	STSM - 1	55 ml.	●
			STSM- 3	330 ml.	
Plastic	5-10 min.	Refill for TAT ATG-3 And 4 Stamp pad.	STP - 1	55 ml.	●
			STP- 3	330 ml.	
	1-5 min Quick dry ink	Refill for TAT Unlinked Stamp pad	STSP - 1	55 ml.	●
			STSP- 3	330 ml.	

INDELIBLE INK

ALL SURFACE

TAT INDELIBLE INK All surfaces



TAT ink for all surfaces

Contains oil based ink with ultra fine pigment particles, ideal for clear and smear resistant marking on non-porous surfaces like metal, plastic, rubber, glass, leather, as well as on porous surfaces like coated paper, wood, etc.

TAT ink is heat-proof, highly oil resistant and shows excellent performance even after exposure to extreme conditions.

Quick dry and Regular dry types are available in 6 different colours (black, blue, red, green, purple and white) for various use.

RECOMMENDED SURFACE	DRYING TIME	USAGE	ITEM	CONTENTS
ALL SURFACES	5-10 min. REGULAR DRY INK	Refill for TAT ATGN-2,3 and 4 Refill for TAT uninked stamp pads	STG-1	55ml.
			STG-3	330ml.
	1-5 min. QUICK DRY INK	Refill for TAT uninked stamp pads	STSG-1	55ml.
			STSG-3	330ml.

INDELIBLE INK

METAL, PLASTIC



TAT ink for metal

Oil based dyestuff ink is specially formulated for marking on metal parts, glass, ceramic, etc.

TAT ink for plastic

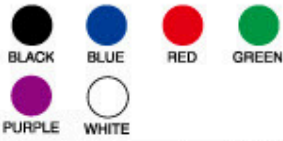
Oil based dyestuff ink is specially formulated for marking on plastic materials, film, etc.

*Special TAT inks are also available for various purposes.

RECOMMENDED SURFACE	DRYING TIME	USAGE	ITEM	CONTENTS
METAL	5-10 min. REGULAR DRY INK	Refill for TAT ATMN-2, 3, 4 Refill for TAT uninked stamp pads	STM-1N	55ml.
			STM-3N	330ml.
	1-5 min. QUICK DRY INK	Refill for TAT uninked stamp pads	STSM-1N	55ml.
			STSM-3N	330ml.
PLASTIC	5-10 min. REGULAR DRY INK	Refill for TAT ATPN-2, 3, 4 Refill for TAT uninked stamp pads	STP-1N	55ml.
			STP-3N	330ml.
	1-5 min. QUICK DRY INK	Refill for TAT uninked stamp pads	STSP-1N	55ml.
			STSP-3N	330ml.

STAMPER

G and SG type



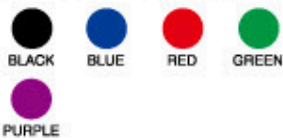
- Ink colours :6 colours
- 20ml
- ※ Recommend white ink for dark-coloured surface

M,SM,P and SP type



- Ink colours :1 colour
- 20ml

Y-70 type



- Ink colours :5 colours
- 20ml



REFILL INK



SOLVENT

TAT Stamper REFILL INK

Type	Product Code	Colour	Contents
Oil based Pigment Ink	Multi purpose type	XQTR-20-G-K	Black
		XQTR-20-G-R	Red
		XQTR-20-G-B	Blue
		XQTR-20-G-G	Green
		XQTR-20-G-V	Purple
		XQTR-20-G-W	White
	Multi purpose type (Quick dry)	XQTR-20-SG-K	Black
		XQTR-20-SG-R	Red
		XQTR-20-SG-B	Blue
		XQTR-20-SG-G	Green
		XQTR-20-SG-V	Purple
		XQTR-20-SG-W	White
Oil based Dye Stuff Ink	Metal	XQTR-20-M-K	Black
	Metal (Quick Dry)	XQTR-20-SM-K	Black
	Plastic	XQTR-20-P-K	Black
	Plastic (Quick Dry)	XQTR-20-SP-K	Black
	Date stamp	XQTR-20/Y-70-K	Black
		XQTR-20/Y-70-R	Red
		XQTR-20/Y-70-B	Blue
		XQTR-20/Y-70-G	Green
		XQTR-20/Y-70-V	Purple

20 ml.

TAT Stamper SOLVENT

Type	Product Code	Contents
Multi purpose, Metal, Plastic,	XQTR-20-RM-31	20 ml.
Quick dry type (Multi purpose, Metal, Plastic)	XQTR-20-RM-32	
Date stamp	XQTR-20-RM-26	

SOLVENT

- Useful for restoring dried pad surfaces, diluting sticky pad surfaces with solvent to a proper consistency, and cleaning rubber stamps or removing impressions.
- When removing impressions, trial is recommended so that the solvent may not damage the objects surfaces.



USAGE	ITEM	CONTENTS	USAGE
SOLVENT for REGULAR DRY INK	SOL-1-31	55ml.	To restore dried or sticky surfaces of TAT stamp pads. Cleaning stamps, removing impressions, etc.
	SOL-3-31	330ml.	
SOLVENT for QUICK DRY INK	SOL-1-32	55ml.	
	SOL-3-32	330ml.	

UN-INKED STAMP PAD

- TATA un-inked stamp pads are for use with TAT ink
- Two types of lid locks (spring lock and roller lock) and three choices of size.



TAT uninked stamp pads are for use with TAT ink.

PAD SIZE		ITEM CODE
MEDIUM	56 x 90mm	ATU-2
LARGE	67 x 106mm	ATU-3
EXTRA LARGE	87 x 143mm	ATU-4

**WALTER HELITRONIC
POWER**



GUIDING MACHINE TOOLS

WALTER HELITRONIC MICRO



WS 11



ROLLOMATIC

NP5



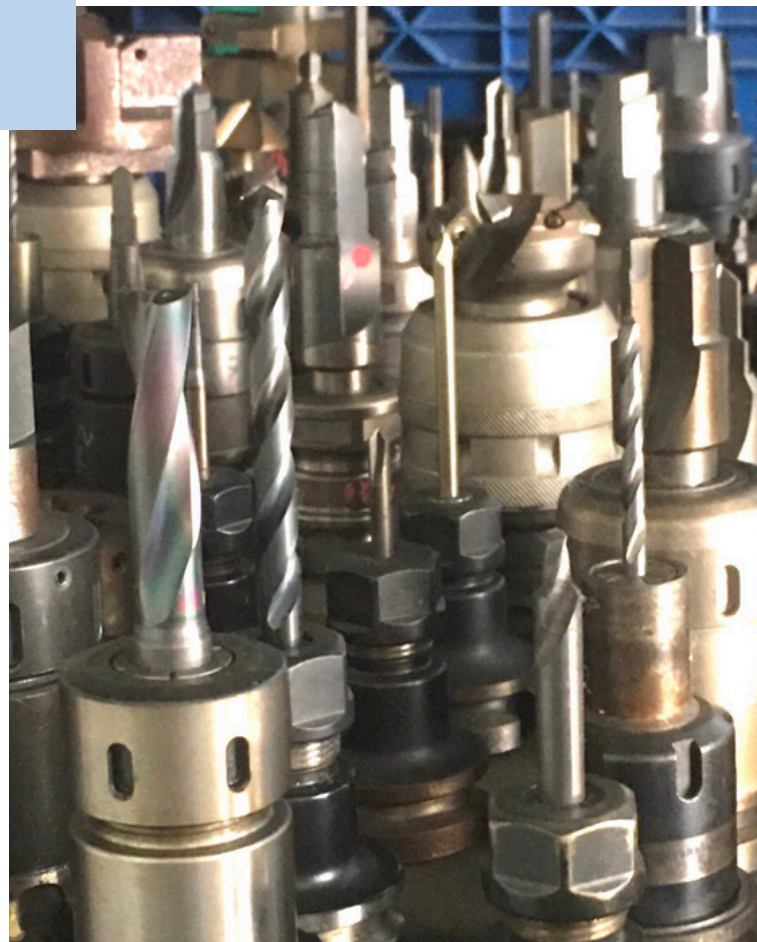
GUIDING MACHINE TOOLS

WALTER HELITRONIC

VISION

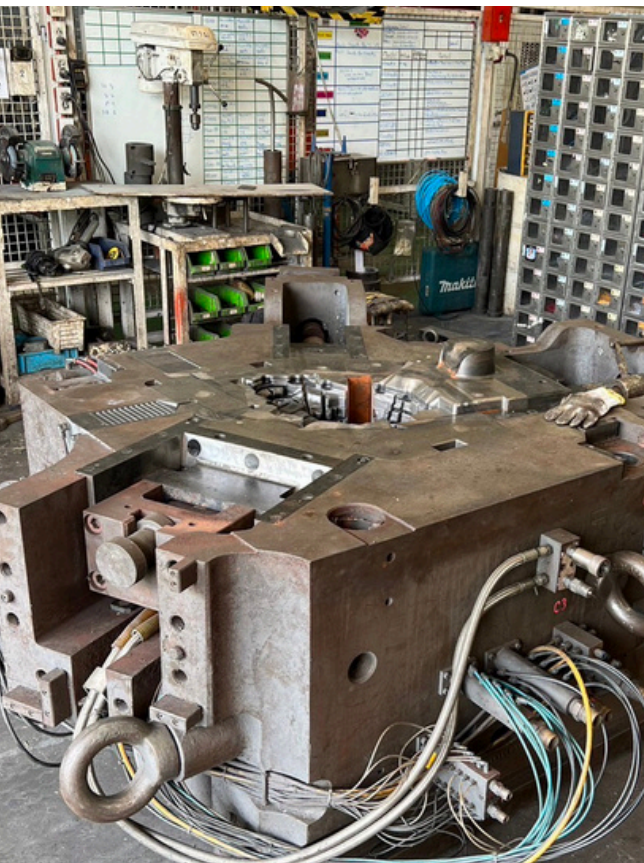


SOLID SPECIAL TOOLS

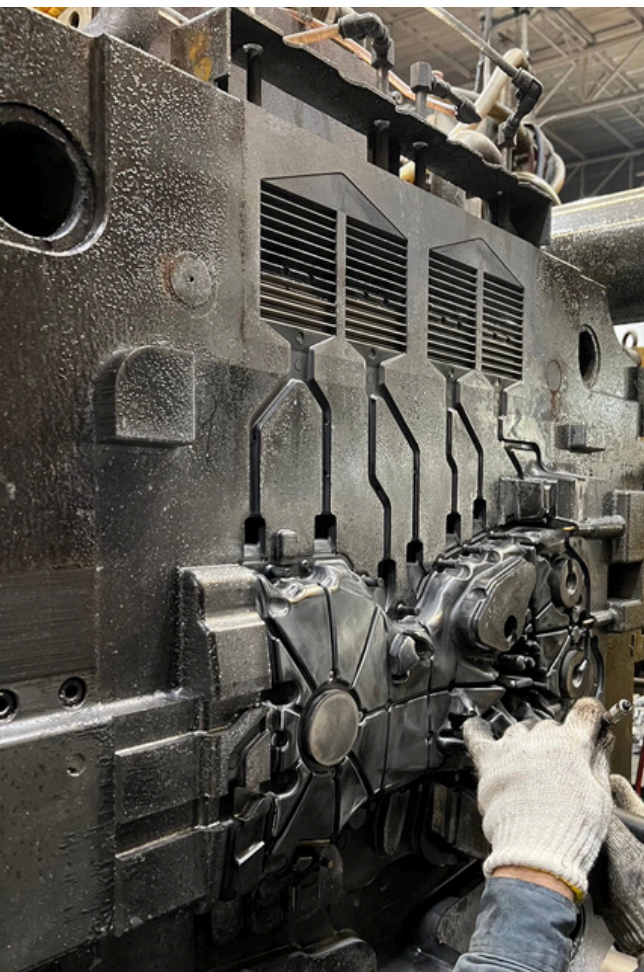


CARBIDE

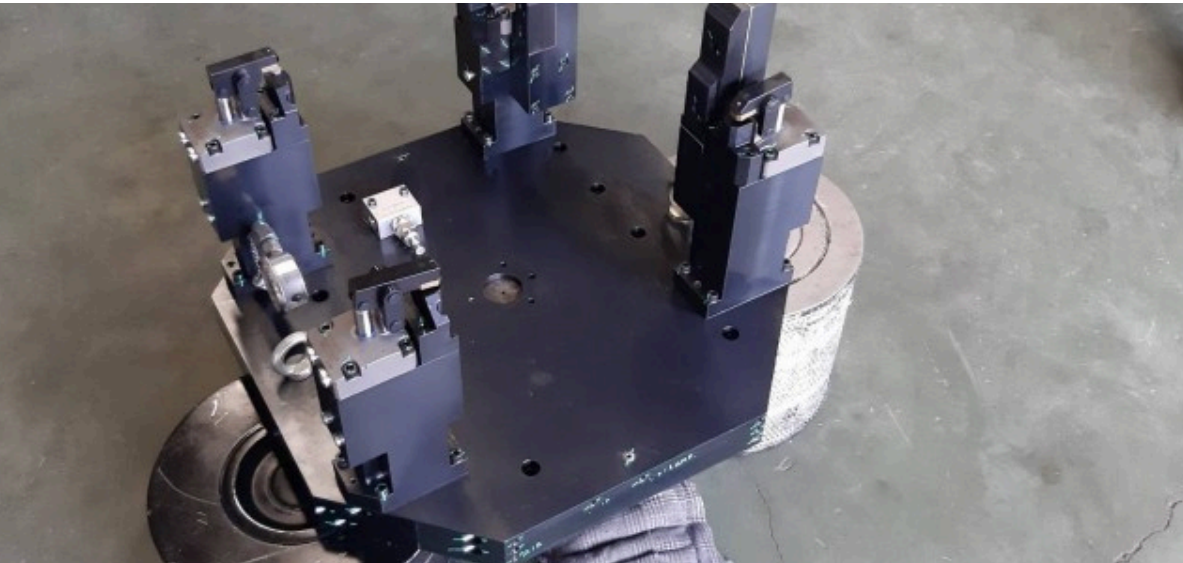
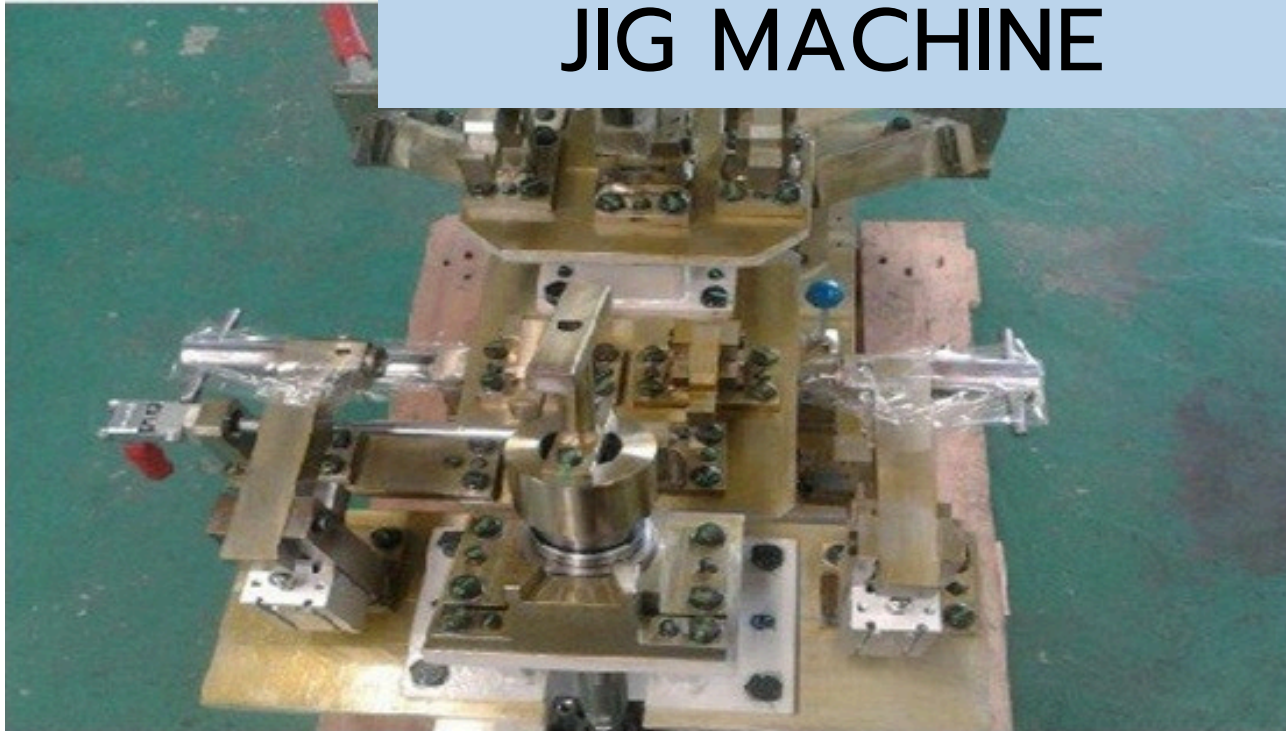




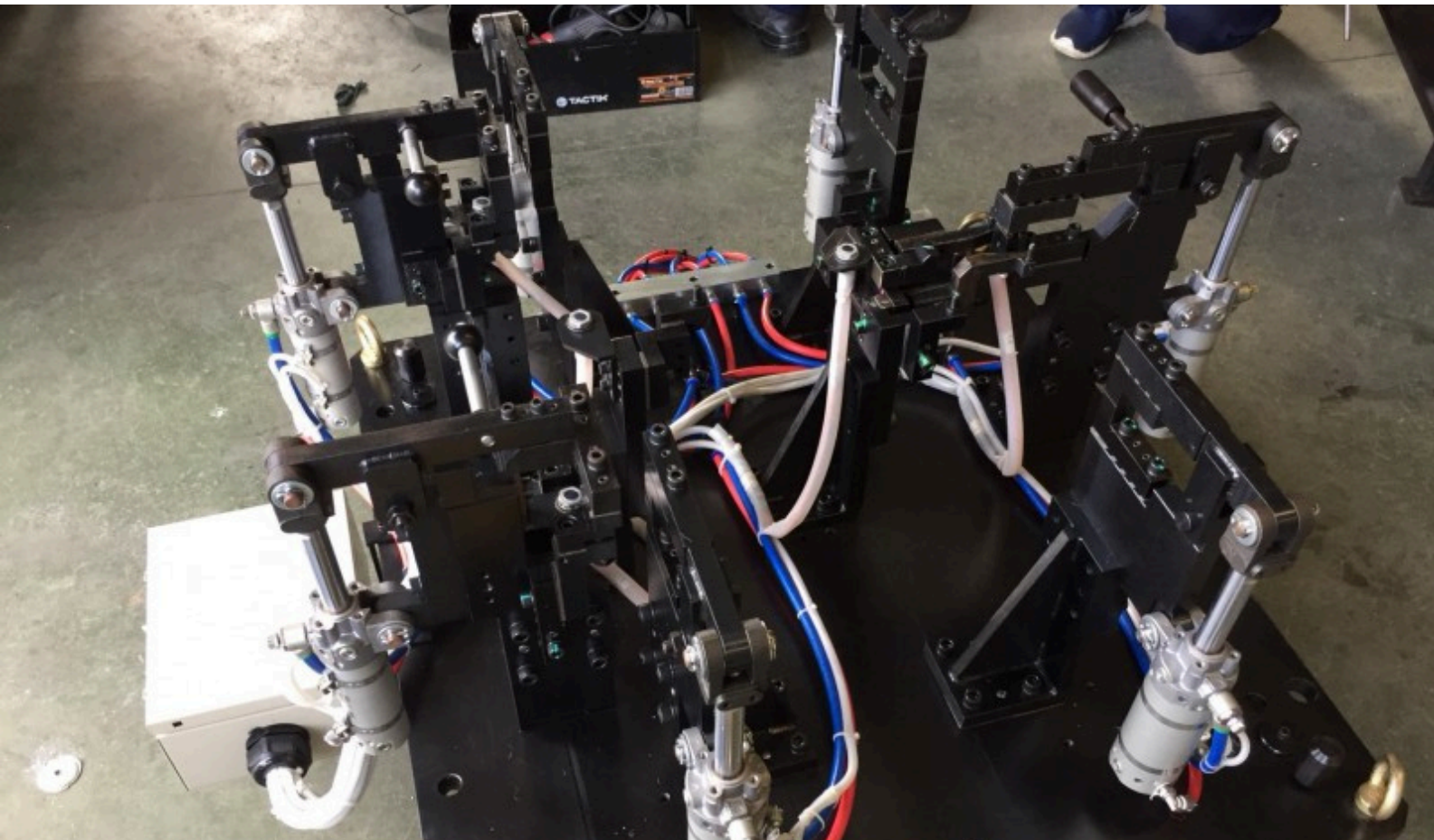
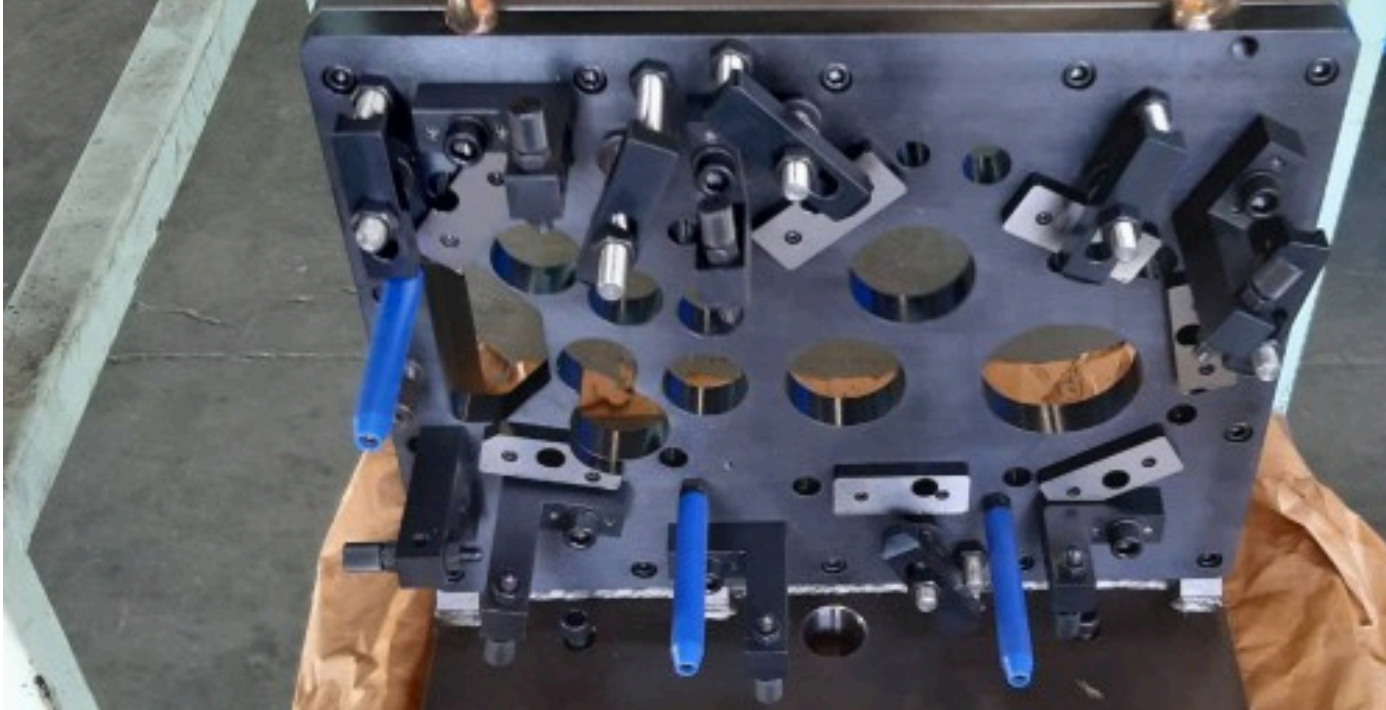
• MAINTENANCE MOLD DIECASTING



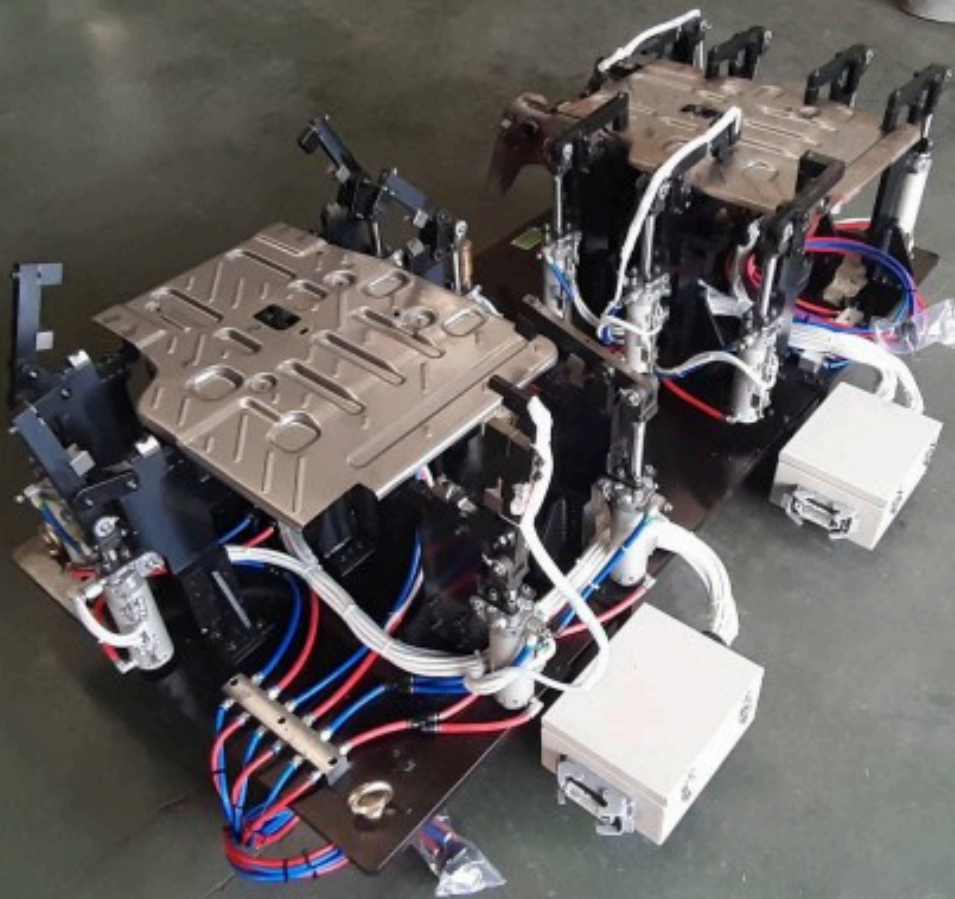
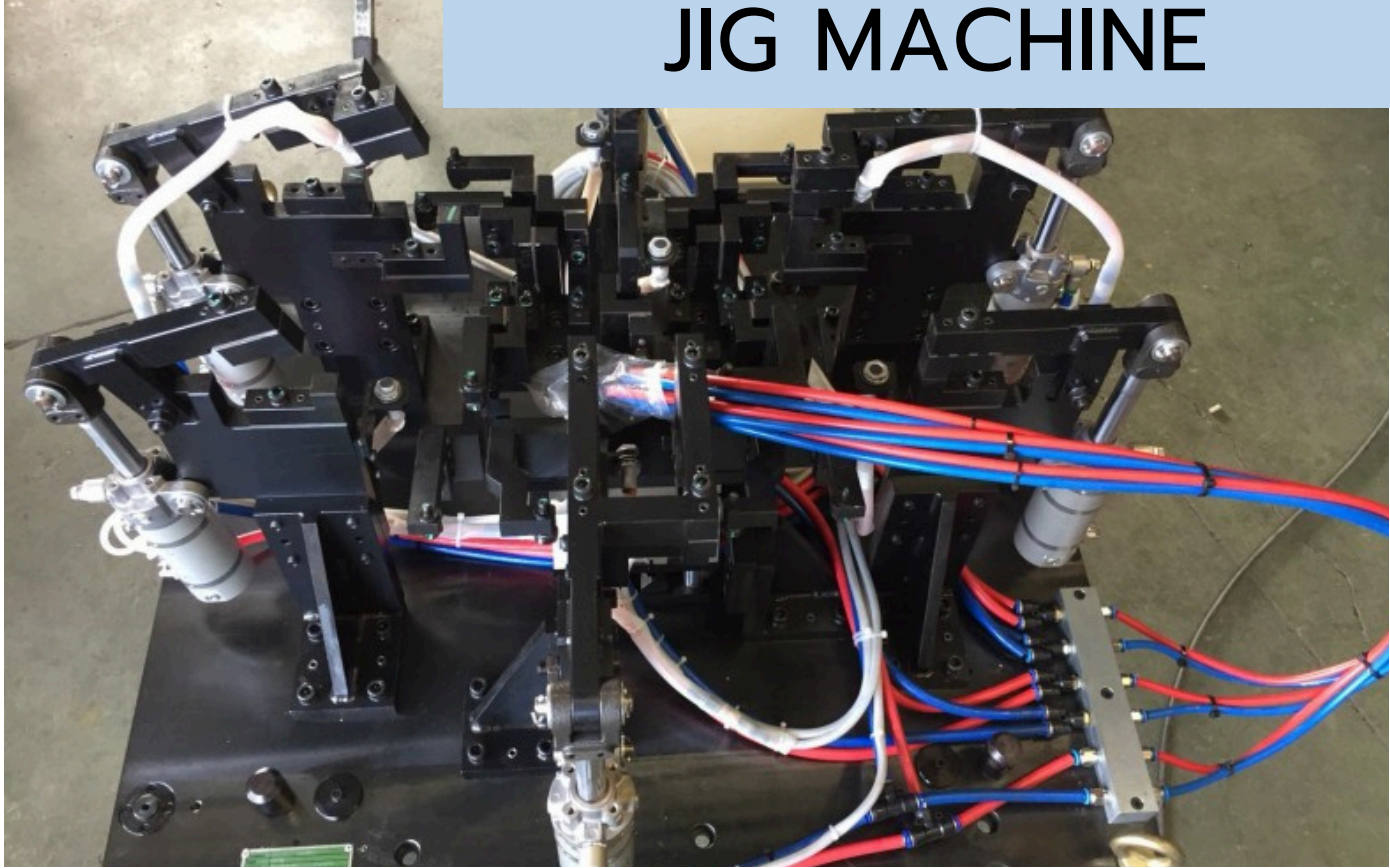
JIG FIXTURE & JIG MACHINE



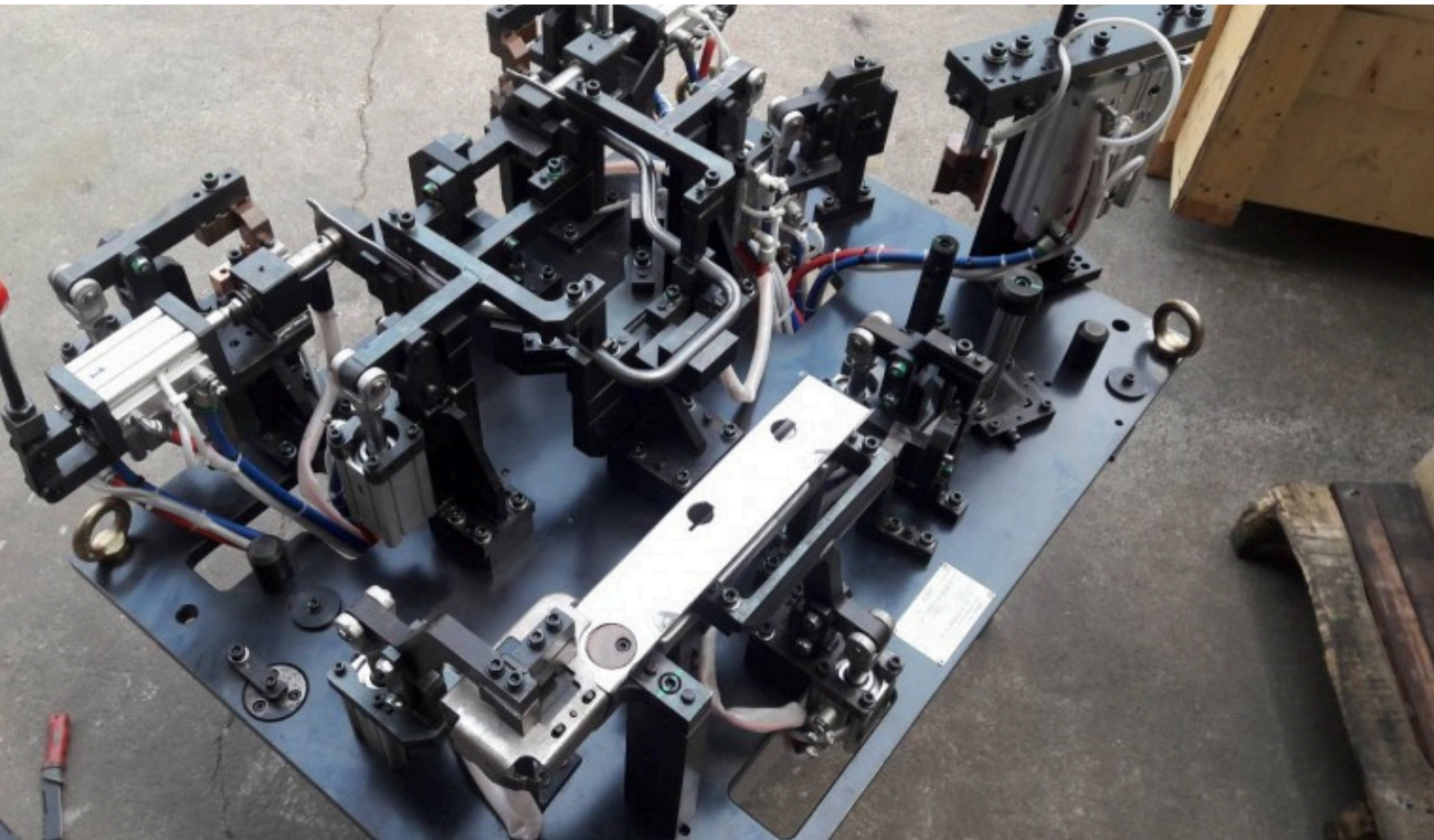
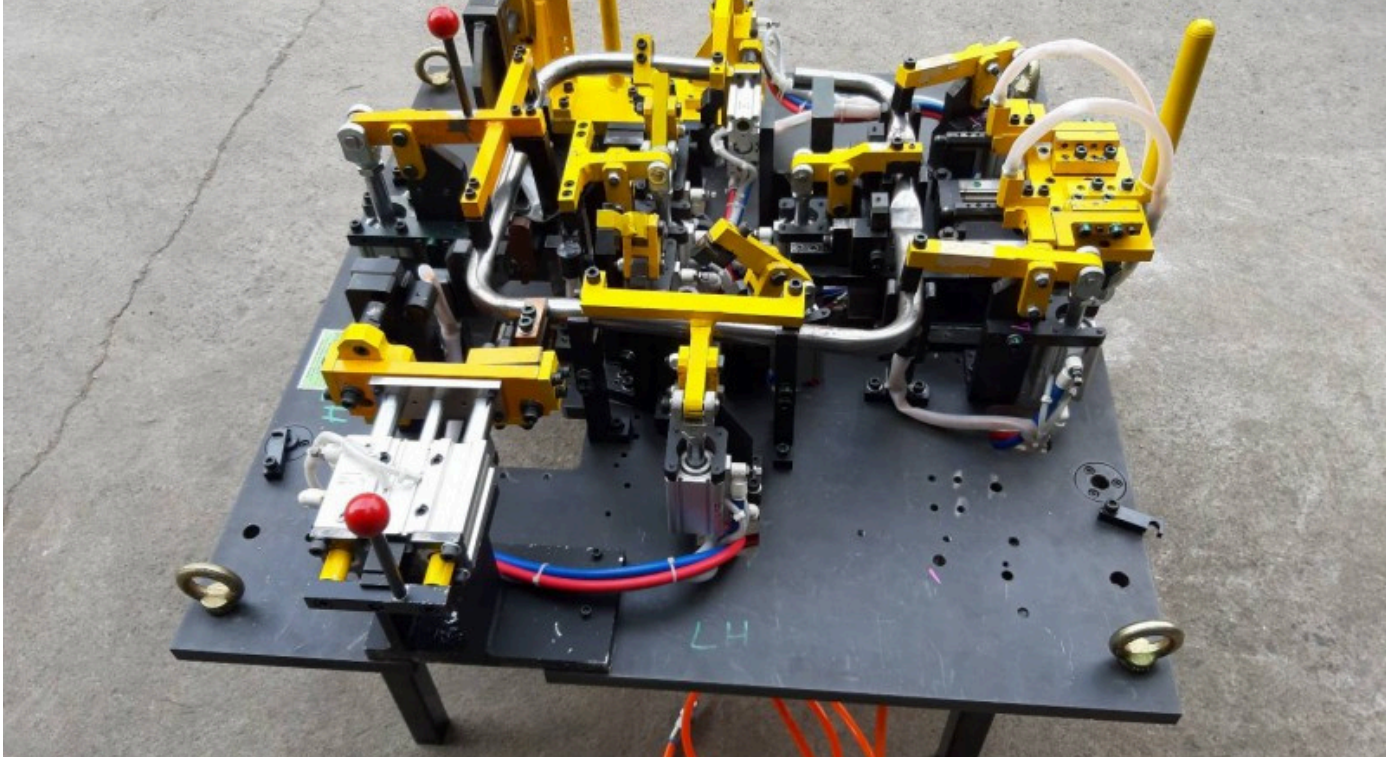
JIG FIXTURE & JIG MACHINE



JIG FIXTURE & JIG MACHINE



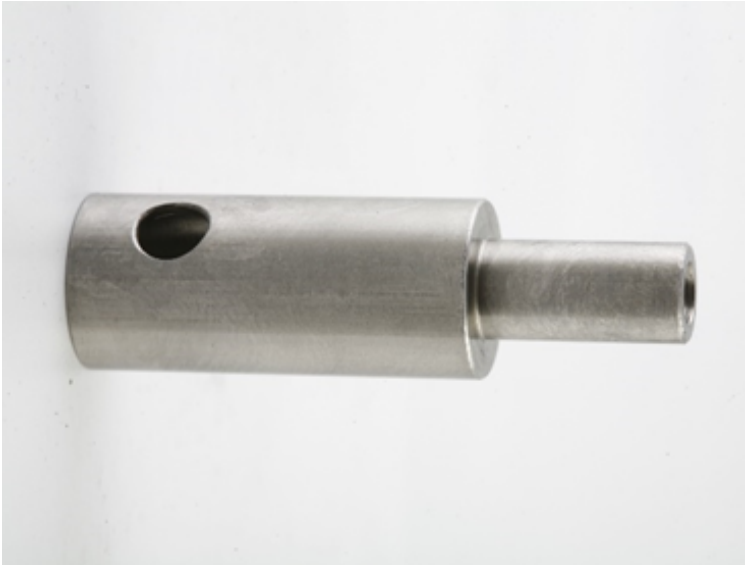
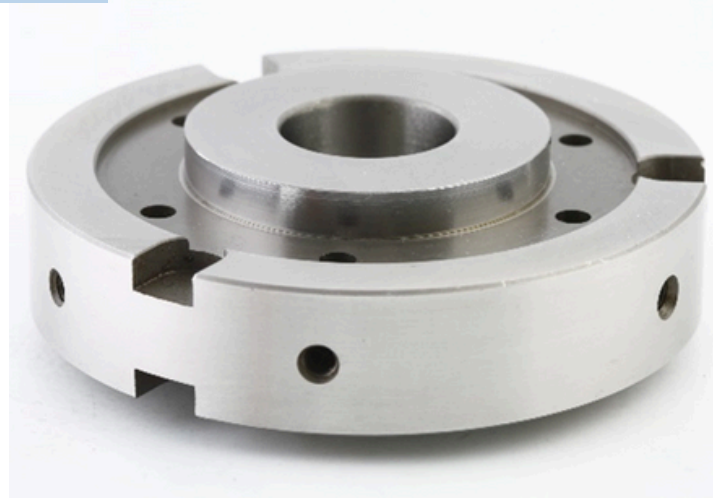
JIG FIXTURE & JIG MACHINE



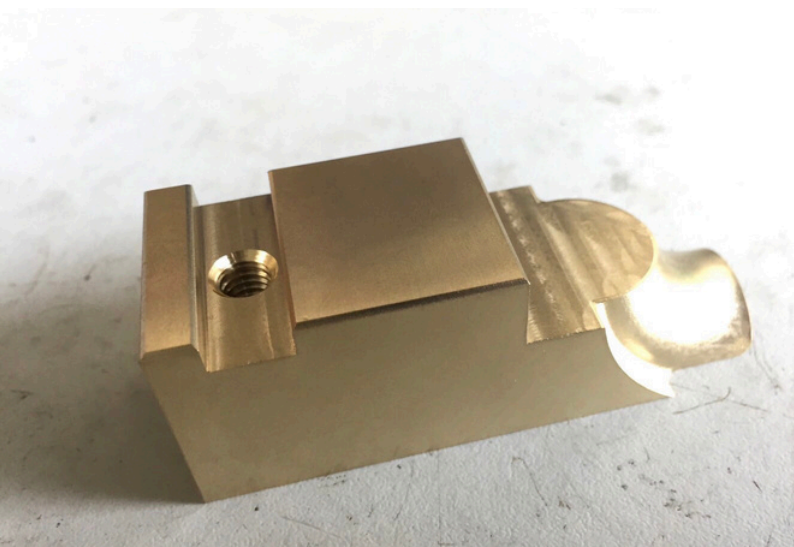
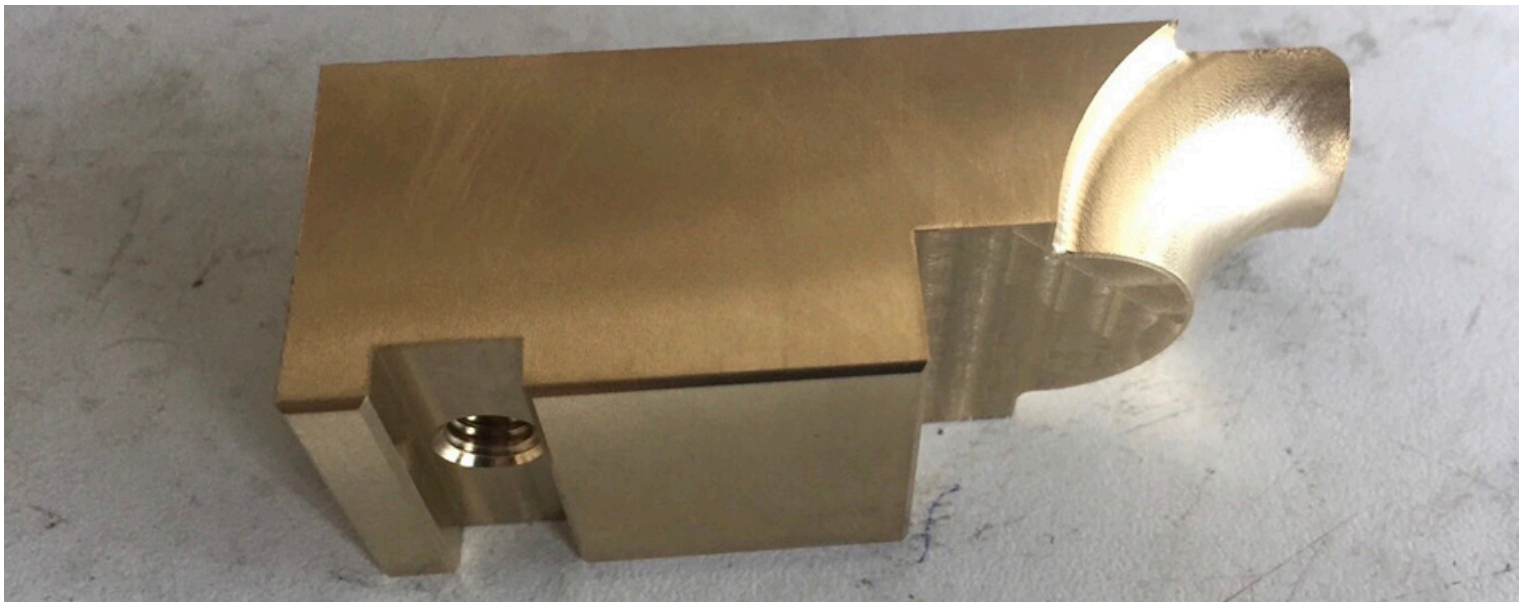
JIG FIXTURE & JIG MACHINE



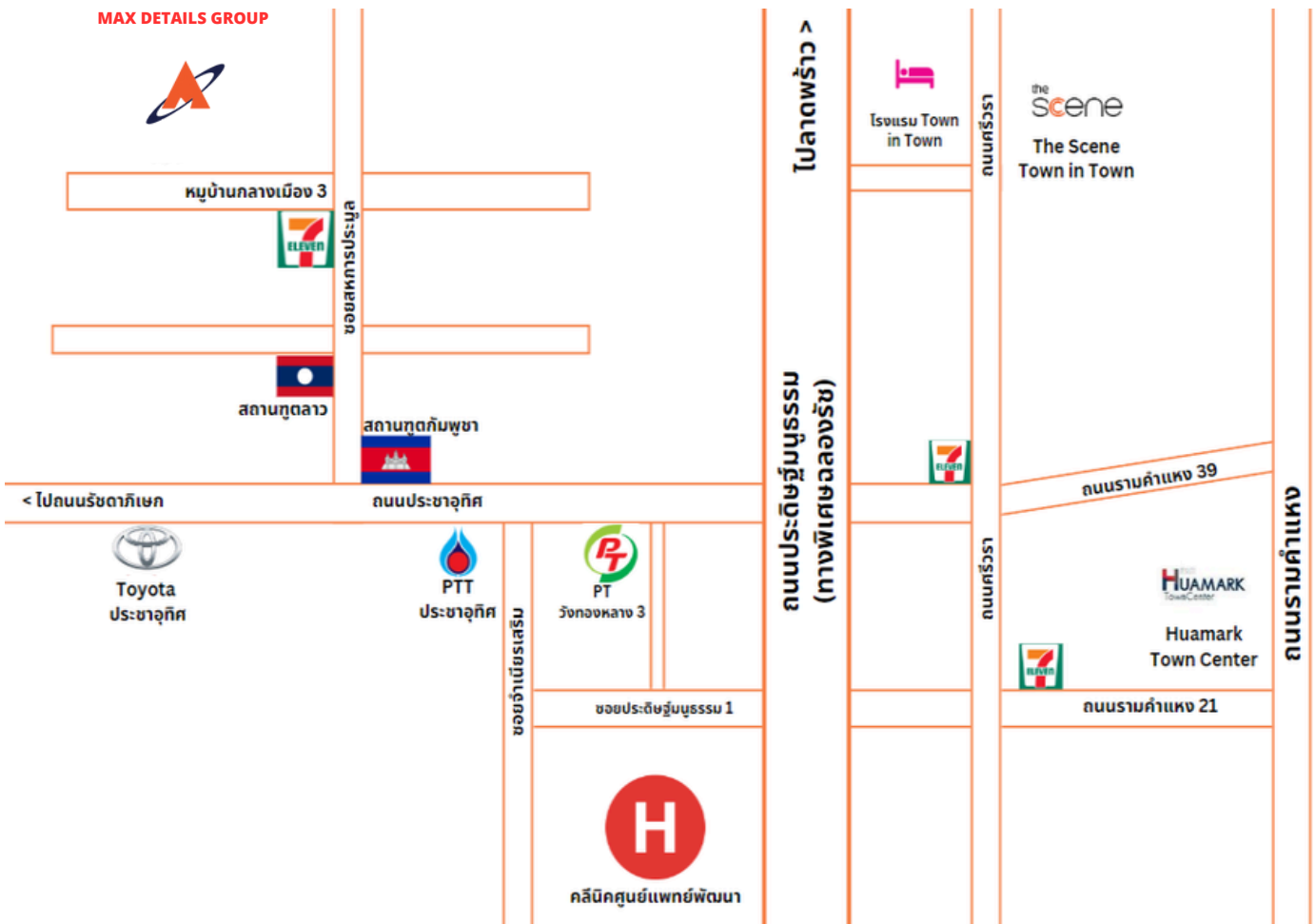
SPARE PARTS



WIPER



OUR LOCATION



542/23 SOI RAMKHAMHAENG 39
(THEPLEELA 1), PRACHA UTHIT ROAD
WANG THONGLANG DISTRICT
BANGKOK 10310

GOOGLE MAP





MAX DETAILS GROUP co., LTD.

EMAIL: INFO@MAXDETAILS.COM

TEL : (+66)02-559-1013

FAX : (+66)02-559-1014

WWW.MAXDETAILS.COM